

PAGEL[®]-USA

INDUSTRIAL GROUTS & MORTARS



PRODUCT INFORMATION



PLEASE SEE THE LATEST INFORMATION ON THE INTERNET AT
WWW.PAGEL-USA.COM



Modern production guarantees high quality



PAGEL® SPEZIAL-BETON GmbH & Co. KG, from Essen in Germany, has been definitive to the development of grout and other specialist mortars for over four decades now. PAGEL® GROUT SYSTEMS, which include the well-known V 1® series of grouts, and PAGEL® CONCRETE REPAIR SYSTEMS have long since established themselves as quality benchmarks across the world.

Pagel develops, produces and sells **special mortars and grout systems** for precision machines, wind turbines, anchor and injection work, **repair systems** for concrete, drinking water reservoirs, sewer and waste water systems, and industrial floors.

Our extensive product range, our products' consistent high quality and high level of reliability, coupled with our hands-on consulting services, are the foundation of the excellent international reputation we enjoy today. Our main concern always has and will be our customers' satisfaction.

As a result, PAGEL® SPEZIAL-BETON GmbH & Co. KG has been **EN ISO 9001**-certified since 1995.

All of our products furthermore comply with the regulations and requirements for the CE mark and our internal production control is certified to **DIN EN 1504-3**, **DIN EN 1504-6** and **DIN EN 1504-7**.

PAGEL® products are produced in more than 10 different countries and sold in more than 50 countries globally through a number of Pagel subsidiaries and contractual partners.

*...we produce great grout
- worldwide!*

TABLE OF CONTENTS

GROUTS		page
GROUT		
V1*/10	grout	4
V1*/50	grout	4
V1*/160	flowable concrete	4
CONCRETE GROUT		
V80C45	concrete grout	4
V160C45	concrete grout	4
PRE-MIXED GROUT		
V14	pre-mixed grout	5
BASALT GROUT		
V15	basalt grout	5
STEEL FIBRE REINFORCED GROUT		
V1A	steel fibre reinforced grout	6
STEEL FIBRE REINFORCED BASALT GROUT		
V1A15	steel fibre reinforced basalt grout	6
SUPER HIGH STRENGTH GROUT		
V1/30HF	super high strength grout	7
V1/60HF	super high strength grout	7
QUICK-SETTING GROUT		
V2	quick-setting grout	7
PRAPID SET GROUT		
VB	rapid set grout	8
PRAPID SET GROUT - PLASTISIZE MOTAR		
VB-P	rapid set grout – plastic consistency	8
TURBO GROUT		
VT	turbo grout	8
TURBO GROUT - PLASTISIZE MOTAR		
VT-P	turbo grout – plastic consistency	8
ANCHOR GROUT		
E1	anchor grout, flowable	9
E1SF	anchor grout, thixo consistency	9
E1F	injection grout, high flowable	9
JOINT FILLER GROUT		
FM10	joint filler grout, 0–1 mm	9
GROUT		
VS*	grout	10
JOINT FILLER GROUT		
VS*-P	joint filler grout	10

CONCRETE REPAIRING

PCC-MORTAR		
MSO2	corrosion protection/adhesion layer	11
MS20*	PCC-mortar	11
PCC-I-MORTAR		
MHO2	corrosion protection/adhesion layer	11
MH20	PCC-I-mortar	11
MH80	PCC-I-mortar	11
PCC-SCREEDING COMPOUND		
MSO5	PCC-screeding compound	12
CONSTRUCTION-MORTAR		
M3*	construction-mortar	12
SPCC-SPRAY-MORTAR		
SP20	SPCC-spray-mortar	12
SP40	SPCC-spray-mortar	12
SPCC-SPRAY-MORTAR		
SP45	SPCC-spray-mortar	13
UNIVERSAL-MORTAR		
U	universal-mortar	13
QUICK-REPAIR-MORTAR		
R20	quick-repair-mortar	13
READY-FOR-USE-MORTAR DRINKING WATER AREA		
TW	ready-for-use-mortar	14
CHANNEL-MORTAR		
KA	channel-mortar	15
REPAIR GROUT		
KA-S	repair grout	15
CHANNEL SLURRY		
KA SLURRY	channel slurry	15

CONCRETE PROTECTION		page
CONCRETE PROTECTION SYSTEM		
O2C	protection paint, (OS-C/OS-B)	16
O2DE	protection coating, (OS-DII)	16
O2A	moisture barrier, (OS-A/OS-B)	16
CEMENT SLURRY		
D1	pagelastic, (OS-DI)	17
SILICEOUS IMPREGNATION		
SEAL SI		
SI 100	siliceous impregnation	17
SILICEOUS SEALANT		
TOP SEAL		
SV 100	siliceous sealant	17

INDUSTRIAL FLOOR

STEEL-FIBRE SCREED		
P3A	steel-fibre flooring	18
INDUSTRIAL FLOOR		
P40	industrial floor	18
SELF LEVELING FLOOR		
FE20	self leveling floor	19
INDUSTRIAL FLOORS - ADHESION LAYER		
PH10	industrial floors - adhesion layer	19

RESINS

PRIMER		
EH1	epoxy resin / dry floor	20
EH114	epoxy resin / low for temperatures	20
EH115	epoxy resin / moist for subsoil	20
COATING		
EH120	thin coating	20
EH130	final coating	20
EH136	surface protection	20
MORTAR		
EH192	epoxy-resin mortar	21
EH2	epoxy-resin boxing up mortar	21
EPOXY-GROUT		
EH196R	epoxy-grout	21

CONSTRUCTION PRODUCTS

CURING MEMBRANE		
O1	curing membrane	22
QUICK-REPAIR MORTAR		
B1	quick-repair mortar	22
CONSTRUCTION AND TILE ADHESIVE		
R34	construction and tile adhesive	22

APPENDIX

PAGEL®-products with CE-marking	23
PAGEL®-concrete-repairing-system table	24
Your first step to PAGEL® – www.pagel.com	25
International contacts	26

CONVERSIONS

1N/mm²	= 1 MPA = 145 PSI	1mm	= 0.04 inch
1 kg	= 2.2 lbs	1 m³	= 35.31 ft³

V1®/10

PAGEL-GROUT*

free flowing over 90 minutes
non-shrink
high early- and final strengths
frost- and salt resistant
oil-resistant
chloride-free
pumpable
ready to use
Meets and Exceeds ASTM
C1107 and CRD-C 621

Machinery
Anchorings
Turbines
Bridge bearings
Potable water equipment
Concrete structures
High storage areas
Pre-cast concrete parts
Rails
Industrial plants



	Grain size inch	Grouting height inch	Compressive strength psi			Bending strength psi			Expansion Vol. %	Yield per bag (ft ³)
			1 d	7 d	28 d	1 d	7 d	28 d		
V1®/10	0 – 1/32	< 1 1/4	7,250	11,368	13,804	870	1,160	1,450	+ 0.5	0.44
V1®/50	0 – 3/16	3/4 – 5	7,012	11,229	13,955	856	1,349	1,450	+ 0.5	0.44
V1®/160	0 – 3/8	5 – 15 3/4	5,360	10,208	13,116	1,015	1,160	1,450	+ 0.5	0.42

Classified in accordance with DafStb-Rili,

	Flowability class	Expansion class	Shrinkage	Early strength class	Compressive strength class	
V1®/10	Categorisation	f ₂	–	SKVM II	A	C55/67
V1®/50	Categorisation	–	a ₃	SKVB I	A	C60/75
V1®/160	Categorisation	–	a ₂	SKVB I	A	C60/75

CONCRETE GROUT

V80 C45

PAGEL-CONCRETE GROUT*

V160 C45

high flowability
low development of warmth
low elasticity module
pumpable
impervious to water and extensively
resistant to oil
ready for use
controlled increase of volume

columns and machines
repairing-grout for prefabricated steel-
concrete units and steel-concrete tubes
support of buildings
grouting of pockets
noise prevention walls
grouting of large volumes with at the
same time control of the hydration
temperatures



	Grain size inch	Grouting height inch	Compressive strength psi			Bending strength psi			Expansion Vol. %	Yield per bag (ft ³)
			1 d	7 d	28 d	1 d	7 d	28 d		
V80 C45	0 – 5/16	2 1/3 – 7 7/8	2,175	5,800	8,700	217.5	507.5	725	+ 0.4	0.42
V160 C45	0 – 5/8	3 1/8 – 15 3/4	2,175	5,800	8,700	217.5	507.5	725	+ 0.4	0.44

Classified in accordance with DafStb-Rili,

	Flowability class	Expansion class	Shrinkage	Early strength class	Compressive strength class	
V80 C45	Categorisation	–	a ₂	SKVB 0	C	C50/60
V160 C45	Categorisation	–	a ₁	SKVB 0	C	C50/60

PAGEL-PRE-MIXED GROUT*

plastic consistency
non-shrinking
high early- and final strengths

Struts
Rail bearings
Bearings/Bridge bearings
Concrete repairs



- V14/10
- V14/40
- V14/80

CE	Grain size inch	Grouting height inch	Compressive strength psi			Bending strength psi			Expansion Vol. %	Yield per bag (ft ³)
			1 d	7 d	28 d	1 d	7 d	28 d		
			V14/10	0 – 0.04	3/8 – 1 3/16	6,525	10,150	10,875		
V14/40	0 – 0.16	3/8 – 2 3/4	6,525	10,150	10,875	725	1,160	1,305	+ 0.5	0.44
V14/80	0 – 0.31	2 – 4	5,800	8,700	10,150	–	–	–	+ 0.5	0.42

BASALT-GROUTS

PAGEL-BASALT-GROUTS*

heat resistant up to 752 °F (short duration)
non-shrinking
high early- and final strengths
high abrasion resistance
building material class A 1
(not inflammable)

High-temperature area
Machinery
Anchorings
Steel struts



- V15/30
- V15/50

	Grain size inch	Grouting height inch	Compressive strength psi			Bending strength psi			Expansion Vol. %	Yield per bag (ft ³)
			1 d	7 d	28 d	1 d	7 d	28 d		
			V15/30	0 – 0.12	1 3/16 – 2	5,800	8,700	10,875		
V15/50	0 – 0.2	1 5/8 – 4	5,800	8,700	10,875	725	1,015	1,160	+ 0.1	0.40

CE *Additives used in these products have an “EG-Conformity Explanation” according to § 9 “Building Product Law Authorization”. Thus the additives correspond to the regulations of the EN 934-2:2001-07.

V1A/40

PAGEL-STEEL FIBRE REINFORCED GROUT*

V1A/80

for heavy traffic
steel fibre reinforced
non-shrinking
extremely high strengths
good elasticity

Heavy Duty Areas
Crane rails
Construction parts
Presses
Foundations



	Grain size inch	Grouting height inch	Compressive strength psi			Bending strength psi			Expansion Vol. %	Yield per bag (ft ³)
			1 d	7 d	28 d	1 d	7 d	28 d		
V1A/40	0 – 0.16	1 5/8 – 2 7/8	5,800	10,150	11,600	870	1,015	1,450	+ 0.5	0.44
V1A/80	0 – 0.32	2 3/8 – 8	5,800	10,150	11,600	-	-	-	+ 0.5	0.42

STEEL FIBRE REINFORCED BASALT GROUT

V1A15/30

PAGEL-STEEL FIBRE REINFORCED BASALT GROUT*

V1A15/50

for heavy traffic
steel fibre reinforced
non-shrinking
extremely high strengths
good elasticity
heat resistant up to 932 °F (short duration)

High-temperature areas
Heavy Duty Areas
Crane rails
Construction parts
Presses
Foundations



	Grain size inch	Grouting height inch	Compressive strength psi			Bending strength psi			Expansion Vol. %	Yield per bag (ft ³)
			1 d	7 d	28 d	1 d	7 d	28 d		
V1A15/30	0 – 0.12	1 5/8 – 3 3/16	6,525	10,150	11,600	870	1,160	1,450	+ 0.5	0.44
V1A15/50	0 – 0.2	2 3/8 – 4 7/8	6,525	10,150	11,600	870	1,160	1,450	+ 0.5	0.42

PAGEL-SUPER HIGH STRENGTH GROUT

high early and final strengths
highly fatigue resistance
controlled and even expansion
pumpable and easy to pour
resistant to cracks even when having a low w/c-value
oscillation-stabilizing

turbines, generators, compressors
wind-powered devices joints
grouting of joints and bearings
rail support systems, Ribbed slabs
and automatic warehouse supports



V1/30HF

V1/60HF

	Grain size inch	Grouting height inch	Compressive strength psi			Bending strength psi			Expansion Vol. %	Yield per bag (ft ³)
			1 d	7 d	28 d	1 d	7 d	28 d		
V1/30HF	0 – 0.12	1 3/16 – 11 3/4	10,150	13,050	17,400	–	–	–	+ 0.1	0.38
V1/60HF	0 – 0.25	1 5/8 – 15 3/4	10,150	13,050	16,675	–	–	–	+ 0.1	0.38

Classified in accordance with DafStb-Rili,

	Flowability class	Expansion class	Shrinkage	Early strength class	Compressive strength class
V1/30HF	Categorisation f ₁	–	SKVM 0	A	C100/115
V1/60HF	Categorisation –	a ₂	SKVB 0	A	C100/115

QUICK-SETTING GROUT

PAGEL-QUICK-SETTING GROUT

load bearing after 2 hours (also at 41 °F)
free flowing
non-shrinking
ready to use
resistant to frost and dew salt
pumpable

Turbines
Anchoring, Fixatores
Machinery
Steel constructions
Bridge bearings
Rails
Struts



V2/10

V2/40

V2/80

V2/160

	Grain size inch	Grouting height inch	Compressive strength psi				Bending strength psi				Expansion Vol. %	Yield per bag (ft ³)
			2 h	4 h	1 d	28 d	2 h	4 h	1 d	28 d		
V2/10	0 – 0.04	3/16 – 1 3/16	725	1,450	4,350	10,150	–	–	–	–	+ 0.4	0.44
V2/40	0 – 0.16	7/8 – 4	725	1,450	3,625	10,150	–	–	–	–	+ 0.4	0.44
V2/80	0 – 0.32	2 – 8	725	1,450	3,625	10,150	–	–	–	–	+ 0.4	0.42
V2/160	0 – 0.63	4 – 15 7/8	725	1,450	5,800	10,150	–	–	–	–	+ 0.4	0.42

CE* Additives used in these products have an “EG-Conformity Explanation” according to § 9 “Building Product Law Authorization”. Thus the additives correspond to the regulations of the EN 934-2:2001-07.

VB10

PAGEL-RAPID SET GROUT

VB40

load bearing after 30 minutes (68 °F)
extremely high early strength
flowable and usable for boxing up
non-shrink
water resistant
resistant to frost and dew salt

Manhole cover grouting
Drain covers
Pipe channels
Installation works
Columns and prefabricated members



CE	Grain size inch	Grouting height inch	Compressive strength psi				Application time min (68 °F)	Expansion Vol. %	Yield per bag (ft ³)
			0,5 h	1 h	1 d	28 d			
VB10	0 – 3/64	3/8 – 2	725	1,160	5,075	8,700	app. 10	+ 0.4	0.46
VB40	0 – 5/32	1 3/16 – 2 3/8	725	1,160	5,075	8,700	app. 10	+ 0.4	0.46

VB-P10

PAGEL-RAPID SET GROUT - PLASTIC CONSISTENCY

extremely fast setting mortar
plastic consistency
is ready for load-bearing within as little as 30 minutes (68 °F)
water impermeable
frost and road-salt resistant

installation of manhole rings
shaft repairing
repair work inside channels



VB-P10	0 – 3/64	3/8 – 2"	725	1,160	5,075	7,975	app. 8	+ 0.4	0.49
---------------	----------	----------	-----	-------	-------	-------	--------	-------	------

TURBO GROUT

VT05

PAGEL-TURBO GROUT

VT10

extremely fast setting grout
is ready for load-bearing within as little as 30 minutes
high flowability
non-shrink
water-impermeable
frost and road-salt resistant

sewer and shaft rehabilitation
for sealing domestic installations
grouting access hatches, slide valves and flaps
grouting of signalling systems used in traffic infrastructure
grouting of feedthroughs for industrial and domestic gas and water installations



	Grain size inch	Grouting height inch	Compressive strength psi				Bending strength psi				Application time min (68 °F)	Yield per bag (ft ³)
			0,5 h	1 h	1 d	28 d	0,5 h	1 h	1 d	28 d		
VT05	0 – 1/32	3/8 – 1 3/16	725	1,160	3,625	7,975	290	290	580	1,160	app. 3	0.46
VT10	0 – 3/64	3/8 – 2	725	1,160	6,525	10,150	290	290	725	1,160	app. 3	0.46

VT-PO5

PAGEL-TURBO GROUT - PLASTIC CONSISTENCY

extremely fast setting mortar
plastic consistency
is ready for load-bearing within as little as 10 minutes (68 °F)
water impermeable
frost and road-salt resistant

installation of manhole rings
shaft repairing



VT-PO5	0 – 1/32	3/16 – 1 3/16	725	870	5,075	7,975	290	290	580	1,160	app. 3	0.46
---------------	----------	---------------	-----	-----	-------	-------	-----	-----	-----	-------	--------	------

PAGEL-ANCHOR GROUT

E1

E1SF

pumpable and injectable
free flowing, non-shrinking
high adhesive strength, mining approvals

E1: workable at 68 °F 45 min.

E1SF: plastic consistency

Mining and tunnel construction
Stabilization of subsoil
Filling of joints and cavities



CE	Grain size inch	Compressive strength psi			Bending strength psi			Expansion Vol. %	Yield per bag (ft ³)
		1 d	7 d	28 d	1 d	7 d	28 d		
E1*	0 – 1/32	5,800	7,975	9,425	725	870	1,015	+ 0.3	0.51
E1SF*	0 – 1/32	2,175	5,800	7,250	580	870	1,015	+ 0.3	0.49

INJECTION GROUT

PAGEL-INJECTION GROUT

E1F

E1F*	0 – 0.005	4,350	6,525	8,700	580	870	1,015	+ 0.5	0.54
-------------	-----------	-------	-------	-------	-----	-----	-------	-------	------

JOINT FILLER GROUT

PAGEL-JOINT FILLER GROUT

FM10

develops high early and final strengths
water-impermeable
pumpable
frost and deicing-salt resistant
certified to fire protection class A1 as
specified by EN 13501 and DIN 4102

for filling the joints between precast
reinforced concrete part with and
without all types of joint profile and
wire rope loop connecting elements
for filling building joints, groves and
hollow spaces
for injecting into and filling overhead
anchor holes



	Grain size inch	Amount of water %	Compressive strength psi			Bending strength psi			Expansion Vol. %	Yield per bag (ft ³)
			1 d	7 d	28 d	1 d	7 d	28 d		
FM10	0 – 0.04	14	2,900	7,250	9,425	580	870	1,160	+ 0.4	0.46

VS®

PAGEL-GROUT

high flowability for at least 90 minutes
easy to pour
controlled expansion with a rigid bond
low development of warmth
low modulus of elasticity
frost and deicing-salt resistant
certified to fire protection class A1 as specified by EN 13501 and DIN 4102

rigid joint grouting to connect concrete parts with PFEIFER-VS® **system elements**
grouting of tensile-and transverse-force stressed and strained prefabricated joints in connection with PFEIFER VS® **SYSTEMS**
grouting of connections with:
PFEIFER **column base system**
PFEIFER **wall shoe system**



U	Grain size inch	Grouting height inch	Compressive strength psi				Bending strength psi				Expansion Vol. %	Yield per bag (ft ³)
			1 d	7 d	28 d	90 d	1 d	7 d	28 d	90 d		
VS®	0 – 3/16	7/8 – 4 7/8	5,800	10,150	11,600	13,050	580	870	1160	1450	+ 0.5	0.44

Approved under the building authority's regulations within the scope of PFEIFER-VS®-Rail Systems:
PFEIFER-VS®-rail systems ISI approval number: Z-21.8-1929
PFEIFER-VS®-rail systems BZ approval number: Z-21.8-1792
PFEIFER-VS®-plus-box approval number: Z-21.8-1839
PFEIFER-VS®-slim-box approval number: Z-21.8-1875

Classified in accordance with DafStb-Rili,

	Flowability/Expansion class	Shrinkage	Early strength class	Compressive strength class
VS®	Categorisation a3	SKVB II	A	C60/75

JOINT FILLER GROUT

VS®-P

PAGEL-JOINT FILLER GROUT

non-shrinking joint filler grout, with a gel-like consistency
pumpable
develops high early and final strengths
water-impermeable
frost and deicing-salt resistant
Certified to fire protection class A1 as specified by EN 13501 and DIN 4102

Joint filler grout used in the building authority approved PFEIFER-VS®-ISI/BZ-Systems^{3D}
For filling vertical and horizontal joints between prefabricated reinforced concrete parts
For filling building joints, groves and hollow spaces



U	Grain size inch	Grouting height inch	Compressive strength psi			Bending strength psi			Expansion Vol. %	Yield per bag (ft ³)
			1 d	7 d	28 d	1 d	7 d	28 d		
VS®-P	0 – 1/16	3/8 – 1 5/8	5,800	8,700	10,150	580	1,015	1,450	+ 0.3	0.44

Approved under the building authority's regulations within the scope of PFEIFER-VS®-Rail Systems:
PFEIFER-VS®-Rail Systems ISI approval number: Z-21.8-1929
PFEIFER-VS®-Rail Systems BZ approval number: Z-21.8-1792

Classified in accordance with DafStb-Rili,

	Consistency	Shrinkage	Early strength class	Compressive strength class
VS®-P	Categorisation gel-like	SKVM II	A	C55/67

PAGEL-PCC-MORTAR

concrete-replacement-system according to ZTV-ING, ZTV-W easy to use suitable for processing on vertical and over-the-head-surfaces single component, sprayable vapor diffusionable reduces the penetration of CO₂ and moisture

MSO2: Corrosion protection and adhesion layer

Wall and ceiling areas and over-head work
Tunnels
Bridges
Facades
Parapets
Reprofiling
ZTV-ING-Application: PCC II
ZTV-W LB291 listed
Stress and strain classification according to DAfStb-RiLi-SIB: M2



MSO2

MS 20®

	Grain size inch	Layer thickness inch	Compressive strength psi			Bending strength psi			Yield per bag (ft ³)
			1 d	7 d	28 d	1 d	7 d	28 d	
MSO2	–	–	–	–	–	–	–	–	0.47
MS 20®	0 – 1/16	1/4 – 1 5/8	2,900	6,525	7,975	580	870	1,160	0.44

PCC-I-MORTAR

PAGEL-PCC-I-MORTAR

concrete-replacement-system according to ZTV-ING, ZTV-W easy to use, plastic-strengthened highly suitable for use on horizontal substrates ready to use, single component resistant to frost and dew salt applicable and loadable under dynamic stress

MHO2: Corrosion protection and adhesion layer

Leveling course for bridges, tunnels and car parks (underlinings and coatings)
Concrete coatings,
Concrete floor surfaces,
Leveling of gradients
Repairs of outbreaks
ZTV ING application: PCC I
ZTV W LB291 listed
Stress and strain classification according to DAfStb-RiLi-SIB: M2



MHO2

MH20

MH80

	Grain size inch	Layer thickness inch	Compressive strength psi			Bending strength psi			Adhesive strength psi	Yield per bag (ft ³)
			1 d	7 d	28 d	1 d	7 d	28 d		
MHO2	–	–	–	–	–	–	–	–	≥ 217.5	0.47
MH20	0 – 1/16	1/4 – 1 5/8	–	5,075	7,975	–	870	1,160	≥ 290	0.44
MH80	0 – 5/16	> 1 3/16	–	5,075	7,975	–	870	1,160	≥ 290	0.44

Nearly all types of grouts are also available with **cements of classes CEM III/A or CEM I HS/NA (free of C₃A)**, - however, the technical data may vary according to cement type.

MS05

PAGEL-PCC-SCREEDING COMPOUND

screeing compound areas (ZTV-ING; OS-C; OS-DII), very high stability and adhesive, single component, universally applicable, plastic-strengthened and ready for use, sprayable, vapor diffusable, resistant to frost and dew salt

Repair of pores, holes, cracks, floor and wall irregularities; Substrates for surface protection coatings; Equalising of concrete maintenance work; Coating of finished parts, masonry and concrete surfaces; Filling of pipe slits



	Grain size inch	Layer thickness inch	Compressive strength psi			Bending strength psi			Adhesive strength psi	Yield per bag (ft ³)
			1 d	7 d	28 d	1 d	7 d	28 d		
MS05	0 – 1/32	1/16 – 1/4	2,175	5,075	6,525	435	870	1,160	≥ 217.5	0.44

CONSTRUCTION - MORTAR

M3®

PAGEL-CONSTRUCTION-MORTAR

Concrete-Replacement-System according to PCC (DAfStb-Repair guideline), high carbonating resistance high bond performance, hardening under dynamic stress and strain

MS02: Corrosion protection and adhesion layer

Demand class M3
Struts
Plates
Bars
Wall and floor surfaces



	Grain size inch	Layer thickness inch	Compressive strength psi			Bending strength psi			Adhesive strength psi	Yield per bag (ft ³)
			1 d	7 d	28 d	1 d	7 d	28 d		
M3®	0 – 1/16	3/16 – 1 5/8	2,900	6,525	7,975	580	870	1,160	≥ 217.5	0.44

SPCC-SPRAY-MORTAR

SP20

PAGEL-SPCC-SPRAY-MORTAR

SP40

SPCC-Spraying areas according to ZTV-ING, ZTV-W

suitable for both wet and dry spraying techniques, tested with different spraying systems, single component, resistant to frost and dew salt, vapor diffusable,

MS02: Corrosion protection

Bridges
Tunnels
Concrete containers
Wall- and seiling surfaces
Facades
Struts, Beams
Waterway constructions



	Grain size inch	Layer thickness inch	Compressive strength psi			Bending strength psi			Adhesive strength psi	Yield per bag (ft ³)
			1 d	7 d	28 d	1 d	7 d	28 d		
SP20	0 – 1/16	up to 5/8	2,900	5,800	7,250	580	870	1,160	≥ 217.5	0.44
SP40	0 – 3/16	up to 3/4	2,900	6,525	8,700	580	870	1,160	≥ 217.5	0.44

* wet spraying method (multiple layers)/dry spraying method (multiple layers)

PAGEL-SPCC-SPRAY-MORTAR

SP45

cementitious, hydraulic SPCC spray mortar for wet spraying application systems
chloride free
extremely stable
resistant to frost and dew salt
water-impermeable

repairing of concrete and reinforced concrete buildings with low compressive strengths
repair of hydraulic structures in the area of responsibility of the *Bundesamt für Wasserbau*
reservoirs, weirs, ship hoists, quay walls



CE	Grain size inch	Layer thickness inch	E-modul (static) N/mm ²			Compressive strength psi			Application time min (20 °C)	Yield per bag (ft ³)
			28 d	28 d	28 d	28 d	28 d	28 d		
SP45	0 – 5/32	13/16 – 2 3/8	< 25,000			3,625			≥ 45	0.44

UNIVERSAL-MORTAR

PAGEL-UNIVERSAL-MORTAR

U02

areas of concrete replacement
free of polymers, single component
resistant to frost and dew salt
building material class A1
(not inflammable)
sprayable
fire protection mortar

Wall and floor surface
Industrial floor
Store and ramp areas
Joints



U05

U10

U20

U40

U80

U160

CE	Grain size inch	Layer thickness inch	Compressive strength psi			Bending strength psi			Adhesive strength psi	Yield per bag (ft ³)
			1 d	7 d	28 d	1 d	7 d	28 d		
U02	0 – 1/64	1/16 – 1/8	2,175	5,800	7,250	580	870	1,015	217.5	0.46
U05	0 – 1/32	1/16 – 1/4	2,175	5,075	7,250	435	725	1,015	217.5	0.46
U10	0 – 3/64	3/16 – 3/4	2,900	7,250	8,700	435	870	1,015	290	0.49
U20	0 – 1/16	3/8 – 1 1/4	2,900	5,800	7,250	435	870	1,015	290	0.46
U40	0 – 5/32	3/8 – 1 5/8	3,625	7,250	9,425	580	870	1,160	290	0.46
U80	0 – 5/16	1 1/4 – 3 1/4	2,900	6,525	7,975	–	–	–	290	0.46
U160	0 – 5/8	≥ 2	5,075	7,250	8,700	–	–	–	290	0.41

Nearly all types of grouts are also available with **cements of classes CEM III/A or CEM I HS/NA (free of C₃A)**, - however, the technical data may vary according to cement type.

R20/02

R20/05

R20/10

R20/20

R20/40

R20/80

PAGEL-QUICK-REPAIR-MORTAR

areas of quick repair
load bearing after 2 hours
(even at 41 °F)
good adhesion
chloride free
easy application

Concrete and mortar surfaces
Self-leveling floors
Stairs
Industrial floors



CE	Grain size inch	Layer thickness inch	Compressive strength psi				Adhesive strength psi	Yield per bag (ft ³)
			2 h	1 d	7 d	28 d		
R20/02	0 – 1/64	1/32 – 3/16	725	2,175	4,350	7,250	≥ 290	0.46
R20/05	0 – 1/32	1/16 – 1/4	725	2,900	5,800	7,250	≥ 290	0.49
R20/10	0 – 3/64	1/8 – 3/4	725	2,900	5,800	7,975	≥ 290	0.46
R20/20	0 – 7/16	3/16 – 1 5/8	725	3,625	5,800	7,975	≥ 290	0.44
R20/40	0 – 5/32	3/4 – 2	725	3,625	6,525	7,975	≥ 290	0.44
R20/80	0 – 5/16	1 3/16 – 4	725	3,625	5,800	7,975	≥ 290	0.44

READY - FOR - USE - MORTAR

TW05

TW10

TW20

TW40

TW05 (white)

TW10 (white)

TW20 (white)

TW40 (white)

PAGEL-READY-FOR-USE-MORTAR - DRINKING WATER AREA

areas for drinking water
fulfilled "Drinking water recommen-
dation" (KTW)
corresponds to DVGW W270 and
W347
resistant to frost and dew salt
sprayable
water impermeable

Drinking water areas
Wall and floor surface of tanks, canals,
dams
Waterpipes
Sewage plants



DVGW W300 W270 W347	CE	Grain size inch	Layer thickness inch	Compressive strength psi			Adhesive strength psi	Yield per bag (ft ³)
				1 d	7 d	28 d		
							7 d	
TW05		0 – 1/32	1/16 – 1/4	2,175	5,075	6,525	217.5	0.52
TW10		0 – 3/64	3/16 – 3/8	3,625	6,525	7,975	290	0.49
TW20		0 – 7/16	3/8 – 1 3/16	3,625	6,525	7,975	290	0.48
TW40		0 – 1/16	13/16 – 1 5/8	3,625	6,525	8,700	290	0.48
TW05 (white)		0 – 1/32	1/16 – 1/4	2,175	4,350	5,800	217.5	0.52
TW10 (white)		0 – 3/64	3/16 – 3/8	2,900	5,800	7,250	290	0.49
TW20 (white)		0 – 7/16	3/8 – 1 3/16	2,900	5,075	6,525	290	0.48
TW40 (white)		0 – 5/32	13/16 – 2 3/8	3,625	5,075	6,525	290	0.46

Nearly all types of grouts are also available with **cements of classes CEM III/A or CEM I HS/NA (free of C₃A)**, - however, the technical data may vary according to cement type.

PAGEL-CHANNEL-MORTAR

KA 20

Channel and waste water range
high resistance against strong
chemical attack
resistant to sulfate attack (industry) and
ammonium attack (agriculture)
sprayable
plastic-strengthened
water impermeable

Channel pipes
Sewage plants
Waste water collecting tank



CE	Grain size inch	Layer thickness inch	Compressive strength psi			Bending strength psi			Adhesive strength psi	Yield per bag (ft ³)
			1 d	7 d	28 d	1 d	7 d	28 d		
KA20	0 – 1/16	1/4 – 1 5/8	2,900	5,800	7,975	580	1,015	1,305	290	0.46

REPAIR GROUT

PAGEL-REPAIR GROUT

KA-S

rapid set repair grout
suitable for all kinds of fast repairs,
filling and sealing
easy to use - requires only water
resilient within a short period of time
impermeable to water
workability approx. 30 sec. (68 °F)

sealing rigid cracks
temporary sealing cracks that leaks
water
assembly and installation grout



	Grain size inch	Layer thickness inch	Compressive strength psi			Bending strength psi			Application time min (68 °F)	Consumption lbs/gal
			1 d	7 d	28 d	1 d	7 d	28 d		
KA-S	0 – 1/32	≤ 13/16	4,350	7,250	8,700	–	–	–	app. 0,5	14.6

CHANNEL SLURRY

PAGEL-CHANNEL SLURRY

KA Slurry

perfectly bonds to load-bearing
concrete and brick substrates
certified to fire protection class A1 as
specified by EN 13501 and DIN 4102
impermeable to water and largely
resistant to oils and fuels
suitable for manual and machine
application

waste water collectors
sewage well
channel and waste water drainage
systems
process water reservoirs
keeps out non-pressing water
(internal and external)



	Grain size inch	Layer thickness inch	Compressive strength psi			Bending strength psi			Consumption lbs/ft ³
			1 d	7 d	28 d	1 d	7 d	28 d	
KA Slurry	0 – 1/32	1/16 – 1/4	3,625	5,800	7,250	725	870	1,015	113

Nearly all types of grouts are also available with **cements of classes CEM III/A or CEM I HS/NA (free of C₃A)**, - however, the technical data may vary according to cement type.


O2C

PAGEL-PROTECTION PAINT

according to OS-C-/OS-B- and/or OS-4/OS-2
 applicable to moist-damp or dry surfaces
 short waiting periods
 vapor diffusable
 free of solvents
 different RAL-colours

Bridges
 Concrete facades
 Curing agent
 Tunnels
 Dams
 Container



	Applications number	Layer thickness inch	Adhesive-strength psi	Application temperature °F	Application time min.	Consumption (1 application) lbs/ft ²
O2C	2	0.005 – 0.014	≥ 188.5	+46.4 – +104	unlimited	0.24 – 0.29

PROTECTION COATING


O2DE

PAGEL-PROTECTION COATING

according to OS-DII- bzw. OS-5A
 crack bridging (even at -4 °F)
 high elasticity
 vapor diffusable
 free of solvents
 different RAL-colours

Bridges
 Concrete and mortar surfaces
 Tunnels
 Areas of fine cracks



	Applications number	Layer thickness inch	Adhesive-strength psi	Application temperature °F	Application time min.	Consumption (1 application) lbs/ft ²
O2DE	3	0.013 – 0.106	≥ 188.5	+46.4 – +104	unlimited	0.34 – 0.35

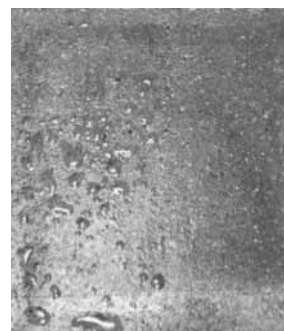
MOISTURE BARRIER


O2A

PAGEL-MOISTURE BARRIER

Impregnation
 according to OS-A-/OS-B and/or OS-1/OS-2
 cream like, solvent-free, alkali-steadily ready for use
 high penetration depth
 prevents surface protection coatings from getting damp underneath
 unique application
 small consumption

Concrete and cement mortar surfaces
 Façades
 Bridges



	Applications number	Layer thickness inch	Adhesive-strength psi	Application temperature °F (min-max)	Application time min.	Consumption lbs/ft ²
O2A	1	–	–	41 – 86	unlimited	0.2


PAGELASTIC

D1

according to OS-DI- bzw. OS-5B
 high elasticity
 crack bridging (even at -4 °F)
 vapor diffusable
 two-components
 water impermeable

Bridges
 Concrete and mortar surfaces
 Tunnels
 Areas of fine cracks
 Balconies, terraces, bathrooms
 Below tiles and all water retaining structures



	Appli- cations number	Layer thickness inch	Adhesive- strength psi	Application temperature °F	Application time min.	Consumption (1 application) lbs/ft ²
D1	2	1/16	≥ 116	+46.4 – +86	120	2.5 – 2.7

SILICEOUS IMPREGNATION

SILICEOUS IMPREGNATION

PAGEL
 SEAL
 SI 100

permanent surface protection
 protection from carbonation
 strengthens the substrate
 protection from blooming
 heat resistant

concrete, walls, floor screed, cellar,
 pipes and horizontal barriers
 applicable with a subsequent protective
 coating of the surface
 areas, which are exposed to a high
 chemical operational demand
 areas that are exposed to salt water



	Appli- cations number	Consistency	Viscosity mPas	Application temperature °F	Density lbs/ft ³	Consumption lbs/ft ²
SEAL SI 100	2	liquid	< 100	+41 – +131	approx 69	0.08 – 0.16

SILICEOUS SEALANT

SILICEOUS SEALANT

PAGEL
 TOP SEAL
 SV 100

strengthens the substrate
 for sealing off against liquids
 for the protection and repair of fresh
 water reservoirs
 protection from blooming
 heat resistant
 ecological

surface protection for concrete, floor
 screed, pipes
 as a sealing against dampness on
 walls
 areas with a high mechanical and
 chemical operational demand
 areas that are exposed to salt water



	Appli- cations number	Consistency	Viscosity mPas	Application temperature °F	Density lbs/ft ³	Consumption lbs/ft ²
TOP SEAL SV 100	1 – 2	liquid	< 100	+41 – +131	approx 69	0.03 – 0.08

P3A

PAGEL-STEEL-FIBRE FLOORING

P3A/15

though elasticity, ready for use
shock and wear resistant

P3A/15: Basalt aggregate heatproof,
shortterm up to 932°F

Rolling and steel plants
Tank workshops
Industrial halls
High temperature areas (**P3A/15**)



CE	Grain size inch	Layer thickness inch	Compressive strength psi			Bending strength psi			Yield per bag (ft ³)
			1 d	7 d	28 d	1 d	7 d	28 d	
P3A	0 – 5/16	1 3/16 – 3 3/16	6,525	10,150	11,600	–	–	–	0.40
P3A/15	0 – 3/16	1 3/16 – 3 3/16	7,250	10,875	12,325	870	1,305	1,595	0.35

INDUSTRIAL FLOOR

P40

PAGEL-INDUSTRIAL FLOOR

P80

ready for use industrial floor
certified to fire protection class A1
hard aggregate class A (DIN 1100)
highly wear resistant
easy to apply and cost-effective
specified for stress group: Medium
(DIN 18560, 7)

industrial floors
ramps
warehouses, hangars
indoor car parking areas
repair workshops



CE	Grain size inch	Layer thickness inch	Compressive strength psi			Bending strength psi			Yield per bag (ft ³)
			1 d	7 d	28 d	1 d	7 d	28 d	
P40	0 – 5/32	3/8 – 1 5/8	7,250	10,150	13,050	725	1,450	2,030	0.38
P80	0 – 5/16	1 3/16 – 3 3/16	7,250	10,150	13,050	725	1,450	2,030	0.38

PAGEL-SELF LEVELING FLOOR

FE 20

cement-bound self levelling floor, based on portland cement, high tightness interior and external area, high flowability can be walked on after 3 hours, impervious to water

composite screed for industrial floors and balance layers, screed linings for living and industrial-buildings, Garages, parkingplaces and balconies, Terraces, cellar soils



CE	Grain size inch	Layer thickness inch	Compressive strength psi			Bending strength psi			Yield per bag (ft ³)
			1 d	7 d	28 d	1 d	7 d	28 d	
FE20	0 – 7/16	3/16 – 3/4	3,625	6,525	7,975	580	870	1,160	0.49

INDUSTRIAL FLOOR / ADHESION LAYER

PAGEL-INDUSTRIAL FLOOR - ADHESION LAYER

PH10

for mineral industrial soil coatings
low water cement value
serves in addition as corrosion protection
PH10/15: Basalt addition

Bonding layer for:
Industrial soil coatings
Industrial floorings
Concrete undergrounds



PH15

	Grain size inch	Layer thickness inch	Compressive strength psi			Bending strength psi			Adhesive-strength psi	Yield per bag (ft ³)
			1 d	7 d	28 d	1 d	7 d	28 d		
PH10	0 – 1/64	–	–	–	–	–	–	319	0.22 – 0.44	
PH15	0 – 7/16	–	–	–	–	–	–	348	0.22 – 0.44	

EH1

EH114

EH115

PAGEL-EPOXY - RESIN

priming
sealing
solidification
adhesion layer
cover sealing

EH1
low viscosity
high penetration
multi purpose unit

dry surface

EH114
fast setting
reacting from +41 °F

low temperatures

EH115
high bonding on moist
subsoil

moist subsoil



CE	Appli- cation number	Layer thickness inch	Compo- nents	Application temperatur °F	Application time min.	Consumption lbs/ft ²
EH1	1	–	2	50 – 86	approx 45	0.05 – 0.16
EH114	1	–	2	41 – 68	approx 20	0.05 – 0.16
EH115	1	–	2	50 – 86	approx 45	0.05 – 0.16

COATING

EH120

EH130

PAGEL-EPOXY - COATING

solvent-free
high density
self leveling
weather-proof
abrasion resistant
water-friendly

EH120 THIN COATING
Epoxy based
self leveling, high build coating
pigmented, with aggregate

EH130 FINAL COATING
final resin coating
Coating for concrete and screed underground
pigmented, without aggregate



CE	Appli- cation number	Layer thickness inch	Compo- nents	Application temperatur °F	Application time min.	Consumption lbs/ft ²
EH120	1	$\frac{3}{64} - \frac{3}{16}$	2	50 – 86	approx 35 – 40	approx 0,29
EH130	1	–	2	50 – 86	approx 45	0.06 – 0.16

PAGEL-EPOXY - MORTAR/GROUT

easy to use
abrasion resistant
water impermeable
three-components
(resin/hardener/sand)

EH2 BOXING UP MORTAR

Struts
Bridge bearing
pigmented

EH192 MORTAR

Industrial hall, storage halls, garages,
repair places, transparent

EH192R

Grout
Rail plate, galvanized steel components and
non-iron-metals, precisionbearings



EH2

EH192

EH196R

CE	Appli- cation number	Layer thickness inch	Compo- nents	Application temperatur °F			Application time min.	Consumption lbs/gal		
	EH2	1	1/8 – 1 5/8	3	50 – 86			30	approx 2	
EH192	1	1/8 – 2	3	50 – 86			30	approx 2		

CE	Grain size inch	Grouting height inch	Compo- nents	Compressive strength psi			Bending strength psi			Con- sumption (ft ²)
				5 h	1 d	10 d	5 h	1 d	10 d	
EH196R	0,02	1/4 – 2	2	10,150	14,500	15,950	1,450	4,350	5,800	0.49

O1

PAGEL-CURING MEMBRANE

protects surfaces against premature water evaporation
provides for slower draining of the concrete, screed and mortar,
forms water vapour-close film
prevents crack formation

Concrete and mortar surfaces
Cement of screeds
Concrete blocks and finished units
dams and heavy structures



	Appli- cation number	Layer thickness inch	Barrier- coefficient %	Application temperatur °F	Application time min.	Consumption lbs/ft ²
O1	1	–	85	+41 – +86	–	0.02–0.03

QUICK-REPAIR MORTAR

B1

PAGEL-QUICK-REPAIR MORTAR

areas of installation
easy to use
quick setting
load bearing
ready for use
waterproof
B1: 5 min.

Fillings of e.g. anchorages
Repair of water break-throughs
filling of holes
Sealings
Assembly
filler for plugholes



	Grain size inch	Layer thickness inch	Compressive strength psi				Bending strength psi			Consumption lbs/ft ²
			1 h	1 d	7 d	28 d	1 d	7 d	28 d	
B1	–	–	362,5	4,350	5,800	7,975	–	–	–	–

CONSTRUCTION AND TILE ADHESIVE

R34

PAGEL-CONSTRUCTION AND TILE ADHESIVE

high bond strength and good flexibility
multi-purpose use
water- / frost resistant

Wall and floor areas
solid foam
Isolation- and protection covering



is supplemented with the following products: R34 white

CE	Appli- cation number	Layer thickness inch	Adhesive strength psi	Application temperatur °F	Application time min.	Consumption lbs/ft ²
R34	1	0.04 – 0.12	≥217.5	+41 – +86	45	2

PAGEL-PRODUCTS WITH CE-MARKING

Products	CE-Conformity	
	EN	Class
GROUT		
V 1/50	1504-6	-
V 1/160	1504-6	-
V 1/10	1504-6	-
V 2/10	1504-6	-
V 2/40	1504-6	-
V 2/80	1504-6	-
V 2/160	1504-6	-
V 14/10	1504-6	-
V 14/40	1504-6	-
V 14/80	1504-6	-
E 1	1504-6	-
E 1 F	1504-6	-
VB 10	1504-6	-
VB 40	1504-6	-
V 1/30HF	1504-6	-
V 1/60HF	1504-6	-

CONCRETE REPAIRING		
MHO2	1504-7	-
MH20	1504-3	R4
MH80	1504-3	R4
MSO2	1504-7	-
MSO5	1504-3	R3
MS20	1504-3	R4
SP20	1504-3	R4
SP40	1504-3	R4
M3	1504-3	R4
UO2	1504-3	R3
UO5	1504-3	R3
U10	1504-3	R4
	13813	CT-C60-F10-A9
U20	13813	CT-C50-F7-A9
U40	1504-3	R4
	13813	CT-C60-F10-A9
U80	1504-3	R4
	13813	CT-C50-F7-A9
U160	1504-3	R4
	13813	CT-C60-F7-A9
R20/O2	1504-3	R3
R20/O5	1504-3	R3
R20/10	1504-3	R4
	13813	CT-C60-F10-A12
R20/20	1504-3	R4
	13813	CT-C60-F10-A12
R20/40	1504-3	R4
	13813	CT-C60-F10-A9
R20/80	1504-3	R4
	13813	CT-C60-F7-A9
R20/160	13813	CT-C60-F7-A9
TW05	1504-3	R3
TW10	1504-3	R4
	13813	CT-C60-F10-A9
TW20	1504-3	R4
	13813	CT-C50-F7-A9
TW40	1504-3	R4
	13813	CT-C60-F10-A9
KA20	1504-3	R4

Products	CE-Conformity	
	EN	Class
CONCRETE PROTECTION		
O2A	1504-2	Hydrophobation
O2C	1504-2	Coating
O2DE	1504-2	Coating
D1	1504-2	Coating

INDUSTRIAL FLOOR		
P3A	13813	CT-C80-F10-A9
FE20	13813	CT-C50-F7-A15
P40	13813	CT-C80-F10-A9
P80	13813	CT-C80-F10-A9

CONSTRUCTION PRODUCTS		
R34	12004	C1 TE

RESINS		
EH1	13813	SR-AR1-B1,5-IR4
EH114	13813	SR-B1,5
EH115	13813	SR-AR1-B1,5-IR4
EH120	13813	SR-AR1-B1,5-IR4
EH130	13813	SR-AR1-B1,5-IR4
EH136	13813	SR-AR1-B1,5-IR4
EH192	13813	SR-AR1-B1,5-IR4
EH2	13813	SR-AR1-B1,5-IR4
EH196R	13813	SR-AR1-B1,5-IR4

- DIN EN 1504 = Products and systems for protection and repair of concrete supporting structures
- DIN EN 1504-3:2005 = Mortar for statically and non-statically relevant repairs
- DIN EN 1504-6:2006 = Product for the anchoring of reinforced bars
- DIN EN 13813 = Properties and requirements on screed (cement-based and epoxy-coatings)
- DIN EN 12004 = Mortars and adhesives for tiles and plates: definitions and specifications
- DIN V 18026 = Surface protection / coating product for concrete from products according DIN EN 1504-2:2005-1

PCC/SPCC-MORTAR-SYSTEMS

Application	System application and product name	Test-certificate no.	Agreement-certifikat no.	Expiry-date	
PCC I	MH02 CORROSION PROTECTION AND ADHESION LAYER	MKB MHB	P-BAM 7.1/25202/8-2	01/2188-1-50-V2	31.03.16
	MH20 PCC-I-MORTAR	WM			
	MH02 CORROSION PROTECTION AND ADHESION LAYER	MKB MHB	P 2141 / 01-110	01/2141/01-110-93-V2	17.09.15
	MH80 PCC-I-MORTAR	WM			
PCC I/II	MS02 CORROSION PROTECTION AND ADHESION LAYER	MKB MHB	P-BAM VII. 1/25203/6-2	00/2188 – 45 – V2	09.09.18
	MS20 PCC-MORTAR	WM			
	MS05 PCC-SCREEDING COMPOUND	FS			
	MS02 CORROSION PROTECTION AND ADHESION LAYER	MKB MHB	P 2334 / 02-159	03/2334/02159-145-V1	18.12.17
	M3 KONSTRUKTIONSMORTAR	WM			
SPCC	WET- and DRY-spraying				
	MS02 CORROSION PROTECTION AND ADHESION LAYER	MKB MHB	P 2255/00-91	00/2255/00-91-67-V2	03.09.15
	SP20 SPCC-MORTAR	WM			
	DRY-spraying				
	MS02 CORROSION PROTECTION AND ADHESION LAYER	MKB MHB	P 2551/01-130	01/2551/01-130-122-V2	09.12.16
	SP40 SPCC-MORTAR	WM			

CONCRETE PROTECTION-SYSTEM

Application	System application and product name	specifications for completion according DIN V 18026	EG-Declaration of Conformity
OS-1	O2A HYDROPHOBATION	H fulfilled	fulfilled
OS-2	O2A HYDROPHOBATION	H fulfilled	fulfilled
	O2C PROTECTION PAINT	OS fulfilled	fulfilled
OS-4	MS05 PCC-SCREEDING COMPOUND	FS fulfilled	fulfilled
	O2C PROTECTION PAINT	OS fulfilled	fulfilled
OS-4	MS05 PCC-SCREEDING COMPOUND	FS fulfilled	fulfilled
	O2DE PROTECTION COATING	OS fulfilled	fulfilled
OS-5b	D1 PAGELASTIC	OS fulfilled	fulfilled

Your first step to PAGEL®

www.Pagel-USA.com

www.Pagel.com




Our Website offers product information, technical specifications, data sheets and more.

For general questions or support regarding concrete your projects, please do not hesitate to contact us.




AUSTRALIA

Danterr PTY LTD
3 Sedgemoor Court
Warrnambool
Victoria
AUSTRALIA 3280
Fon.: +61 1800 262 383
Fax: +61 (3) 5561 5499
eMail: sales@danter.com
Internet: www.pagel.com.au


BULGARIA

BORIS BORISOV – TERRA
Stara Planina 9
BG-5890 VALCHITRAN
okr. Plevenski
Fon.: +420 608 219280
eMail: terra3d@abv.bg
eMail: terra2@seznam.cz
Internet: www.terrabulgarien.com


DENMARK

MB Projekt ApS
Mølledamsvej 12
DK-3460 BIRKERØD
Fon.: +45 45820318
Fax: +45 45820518
eMail: info@mbprojekt.dk
Internet: www.mbprojekt.dk


FRANCE


PAGEL SAS
Espace Cristal
22, rue Gustave Eiffel, BP10058
F-78306 POISSY CEDEX
Fon.: +33 1 39223900
Fax: +33 1 39224039
Mobil: +33 6 12821911
eMail: info@pagel.fr
Internet: www.pagel.fr


INDIA

Pidilite Industries Limited
Ramakrishna Mandir Road,
Kondivita, Andheri- East
IND-Mumbai 400059
Fon.: +91 22 2835 7000
Fax: +91 22 2835 7008
Mobil: +91 845 1802485
eMail: sujit.chandra@pidilite.com
Internet: www.pidilite.com


ISRAEL

SEALTEC CONSTRUCTION CO. LTD
1 Bareket St.
IL-37807 BEIT HANANYA
Fon.: +04 6100333
Fax: +04 6101510
Mobil: +050 5210364
eMail: sealtec@netvision.net.il
Internet: www.sealtec.co.il


KOREA (REPUBLIC)

IZIN CORPORATION CO.
#302 Hee mang BLDG,
1207-5, GAEP0-DONG, KANGNAM-GU,
ROK-SEOUL
Fon.: +82 2 5734893
Fax: +82 2 5734894
Mobil: +82 10 53893364
eMail: izin0325@naver.com


AUSTRIA

Penta Bautechnik GmbH
Jaidhof 30
A-3542 JAIDHOF
Fon.: +43 2716 93044-11
Fax: +43 2716 93044-21
eMail: vertrieb@penta-bau.at
Internet: www.penta-bau.at


CHINA

Beijing OuHuaLian Science & Technology Ltd
(BOST)
Room 1308, 2# Building, LongQi Plaza,
Huangping Road Changping District,
102200 BEIJING P.R. CHINA
Fon.: +86 10 82920623/24
Fax: +86 10 82927921
eMail: pagel_china@ouhualian.com
Internet: www.pagel.com.cn


ESTONIA

Baby Holding OY
Peeter Erg
Ülase 8-10
EST-75501 SAKU HARJUMAA
Fon.: +372 53 583696
eMail: info@betoniplast.eu
Internet: www.betoniplast.eu


GERMANY

PAGEL SPEZIAL-BETON GmbH & Co. KG
Wolfsbankring 9
D-45355 ESSEN
Fon.: +49 201 68504-0
Fax: +49 201 68504-31
eMail: info@pagel.com
Internet: www.pagel.com


IRAN


PAGEL IRAN ARSHIA ORANG CO.
No.20, 5th St., North Falamak Ave.
Shahrak Gharb
IR-ZIP 1467885484-TEHRAN
Fon.: +98 21 88370130
Fax: +98 21 88075715
eMail: info@arshiaorang.com
Internet: www.arshiaorang.com


ITALIA

PAGEL ITALIA
Gaetano Lombardo
Via G. Murari Bra' 49/c
IT-37136 VERONA
Fon.: +39 3450 117540
eMail: info@pagel.it
Internet: www.pagel.it


LATVIA

SIA "OK BUVMATERIALI"
Piedrujas iela 3d
LV-1073 RIGA
Fon.: +371 673 65636
Fax: +371 673 65626
eMail: okbuv@okbuv.lv
Internet: www.okbuv.lv


BELGIUM

REWAH N.V.
Nijverheidsweg 24
B-2240 ZANDHOVEN
Fon.: +32 3 4751414
Fax: +32 3 4751094
eMail: info@rewah.com
Internet: www.rewah.com


CROATIA

PSB SPECIJALNI BETON d.o.o.
Adamićeva 3
10020 ZAGREB
Mobil: +385 91 3023902
Tel: +385 1 5590411
Fax: +385 1 5606180
eMail: pagel.info@gmail.com


FINLAND

ALIMEX OY
Huvilakatu 12
FIN-04400 JÄRVENPÄÄ
Fon.: +358 9 2922350
Fax: +358 9 2916006
Mobil: +358 40 5000987
eMail: myynti@alimex.fi


HUNGARY

EXTRACEM Kft.
Damjanich u. 26
H-2832 HÉREG
Fon.: +36 34 372671
Fax: +36 34 372671


IRELAND

Contech Accessories Limited
Lough Feilim Industrial Estate
Carlow Road
IRL-TULLOW, COUNTY CARLOW
Fon.: +353 59 9151350
Fax: +353 59 9152793
eMail: sales@contech-accessories.ie
Internet: www.contech-accessories.ie


JAPAN

PAGEL NIPPON CO. LTD.
Matsushit Bldg. 3 F
2-12-13 Shinkawa, Chuo-Ku
J-100 TOKYO
Fon.: +81 3 35535264
Fax: +81 3 35535984
eMail: pagel-nippon@mwe.biglobe.ne.jp
Internet: www.b-info.jp/pagel-nippon/


LITHUANIA

UAB MOSAS
Birželio 23-iosios g. 5
LT-03206 VILNIUS
Fon.: +370 5 2610179
Fax: +370 5 2608355
eMail: vytautas@mosas.lt
Internet: www.mosas.lt



NORWAY

PAGEL INDUSTRIMØRTEL A/S
Postboks 135
N-1751 HALDEN
Fon.: +47 69 192514
Fax: +47 69 191840
Mobil: +47 95 107110
eMail: larssen@pagel.no



QATAR

CIKO Middle East
"C" Ring Road
Q-DOHA
Fon.: +974 44114787
Fax: +974 44114792
eMail: enquires@cikome.com
Internet: www.cikome.com



RUSSIA

ZAO "ASOKA"
Frunsenskaja nab. 30, bld. 28
RUS-119146 MOSKAU
Fon.: +7 495 7816070
Fax: +7 495 7816070
eMail: pagel@asoka.ru
Internet: www.asoka.ru



SPAIN

YA YA MATERIALES, S.L.U.
Camino de La Era, 16
E-38750 EL PASO
Fon.: +34 922 485450
Fax: +34 922 486206
eMail: info@yaya.es
Internet: www.yaya.es



SWITZERLAND

Rolloplan AG/SA
Feldmattstrasse 23
Postfach 323
CH-6032 EMMEN
Fon.: +41 41 2602074
Fax: +41 41 2602075
Mobil: +41 79 3532074



UKRAINE

KNP
ul. Naukova, 7-A/303
UA-LWOW, 79060
Fon.: +38 322 244685
Fax: +38 322 244683
eMail: ngroup.ua@gmail.com



POLAND

PAGEL POLSKA
ul. Lipowa 7, Komorniki
PL-55-300 ŚRODA ŚLĄSKA
w. dolnośląskie
Fon.: +48 71 3172806
Fax: +48 71 3176136
Mobil: +48 601 701877
eMail: info@pagel.pl
Internet: www.pagel.pl



CZECH REPUBLIC

HIC & SERVICES S.R.O.
Teplárenská 611/1
CZ-10800 PRAHA 10
Fon.: +420 2 72702112
Fax: +420 2 72702123
eMail: hic@hic.cz
Internet: www.hic.cz



SLOVAKIA

ALLMEDIA s.r.o.
Pod gaštanmi 4
SK-821 07 BRATISLAVA
Fon.: +421 2 62310920
Fax: +421 2 62413041
eMail: allmedia@allmedia.sk
Internet: www.allmedia.sk



SRI LANKA

CONCRETE CHEMICAL PRODUCTS
Ralf Karpinski - General Manager
73, Pepiliyana Road
LK-NUGEGODA
Fon.: 0094 114303218
0094 112812916
Cell: 0094 777714411
Fax: 0094 114304890
eMail: concreteralf@eureka.lk



TAIWAN

TAIWAN POLIMAX CO., LTD.
11F, No. 257
Wen Tsz Rd., Tzuo Ying District,
ROC-KAOHSIUNG CITY, TAIWAN
Fon.: +886 734 38910
Fax: +886 734 30476
Mobil: +886 933 324207
eMail: bat1001@ms32.hinet.net



UNITED KINGDOM

PES (UK) LIMITED
Unit 1, Watling Close
Sketchley Meadows Business Park
GB-HINCKLEY, LEICESTERSHIRE,
LE10 3EZ
Fon.: +44 1455 251251
Fax: +44 1455 251252
eMail: sales@pesukltd.com
Internet: www.pesukltd.com



PORTUGAL

BIU INTERNACIONAL
Consultoria e Comércio, Lda.
Rua Gil Vicente, N° 4
P-2615 ALVERCA
Fon.: +351 21 9578888
Fax: +351 21 9578890
eMail: info@biu.pt
Internet: www.biu.pt



ROMANIA

PAGEL ROMANIA S.R.L.
Str. G-ral. Candiano Popescu Nr. 63A
Ap.1 Sector 4
RO-040581 BUCUREȘTI
Fon.: +40 21 3206859
Fax: +40 21 3224254
eMail: office@pagel.ro
Internet: www.pagel.ro



SOUTH AFRIKA

Megapascal Contracting Technologies
123 New Road, Grand Central
ZA-1685 MIDRAND
Fon.: +27 11 8050683
Fax: +27 11 8052020
Mobil: +27 829069701
eMail: megapascal@mweb.co.za



SWEDEN

PAGEL SPECIALBRUK
Postadress EURO SPECIALBRUK
Fredsgatan 18
S-43243 VARBERG
Fon.: +46 340 675258
Fax: +46 340 675257
Mobil: +46 705 738743
eMail: johansson@pagel.se
Internet: www.pagel.se



THE NETHERLANDS

VERWAARD HANDELSONDERNEMING B.V.
Postbus 478
NL-2740 AL Waddinxveen
Fon.: +31 88 5401100
Fax: +31 88 5401199
Mobil: +31 6 20091680
eMail: info@verwaard-bv.nl
Internet: www.verwaard-bv.nl



USA

PAGEL-USA LLC
4290 Shoreline Drive
USA-SPRING PARK,
MINNESOTA 55384
Fon.: +1 952 9426105
Fax: +1 952 9426108
eMail: sales@pagel-usa.com
Internet: www.pagel-usa.com

PAGEL® PAGEL®-USA

4290 SHORELINE DRIVE · SPRING PARK
MINNESOTA 55384 · USA
PHONE +1 (952) 942 6105 · FAX +1 (952) 942 6108
WWW.PAGEL-USA.COM · SALES@PAGEL-USA.COM



PAGEL® SPEZIAL-BETON GMBH & CO.KG

WOLFSBANKRING 9 · 45355 ESSEN · GERMANY
TEL. +49 201 68504-0 · FAX +49 201 68504-31
INTERNET WWW.PAGEL.COM · E-MAIL INFO@PAGEL.COM



The information provided in this leaflet, is supplied by our consulting service and is the end result of exhaustive research work and extensive experience.

They are, however, without liability on our part, in particular with regard to third parties proprietary rights, and do not relieve the user of the responsibility for verifying that the products and processes are suitable for the intended application.

The data presented was derived from tests under normal climate conditions according to DIN 50014 and mean average values and analysis.

Deviations are possible when delivery takes place.

Given that recommendations may differ from those shown in this leaflet written confirmation should be sought. It is the responsibility of the purchaser to ensure they have the latest leaflet issue and that its contents are current.

Our customer service staff will be glad to provide assistance at any time.

We appreciate the interest you have shown in our products.

This technical data sheet supercedes previously issued information.

Please find the latest leaflet issues at www.pagel-usa.com.